

**JOURNÉE FILIÈRE IBB**  
16/06/2016

BIO DIRECT Le Parc Biologique - 2 Eco-parc de la Gravelle, 53 430 La Gravelle, tél: 02 43 53 64 50 / contact@porcbiologique.fr

---

---

---

---

---

---

---

---

**FILIERE BIO DIRECT**

---

---

---

---

---

---

---

---

**Qui sommes nous ?**

70 producteurs sur 20 départements

Zone d'élevage Site d'abattage Atelier d'abattage

---

---

---

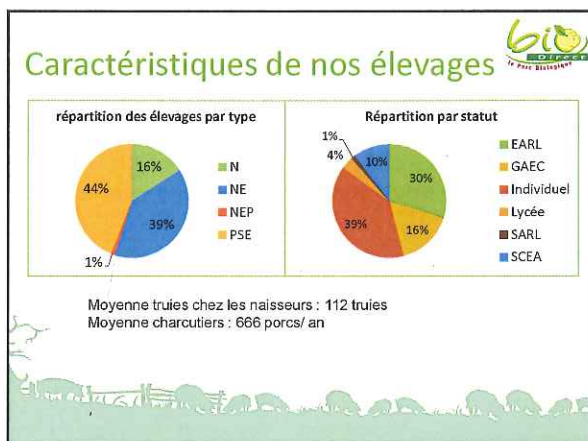
---

---

---

---

---




---

---

---

---

---

---

---

---

---

---

---

---




---

---

---

---

---

---

---

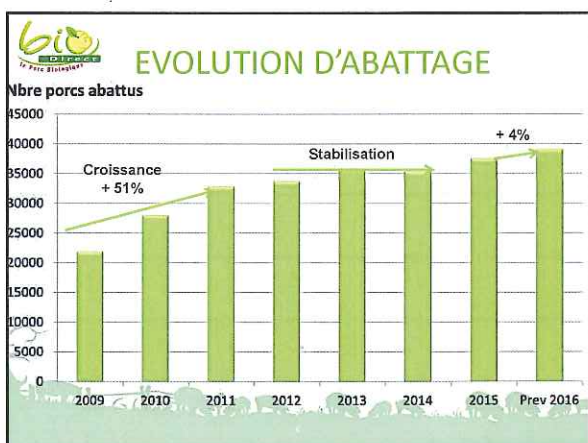
---

---

---

---

---




---

---

---

---

---

---

---

---

---

---

---

---



---

---

---

---

---

---

---

---



---

---

---

---

---

---

---

---



---

---

---

---

---

---

---

---

## Historique



**2012 : Reprise par éleveurs BIO DIRECT**

- Mars 2012 : Reprise du fond de commerce conventionnel ,  
=> savoir faire artisanal consolidé
- Sept 2012 : Démarrage gamme BIO,
- Juillet 2013 : Validation programme investissement (Gamme LS),
- Septembre 2013 : Définition gamme LS Bio



---

---

---

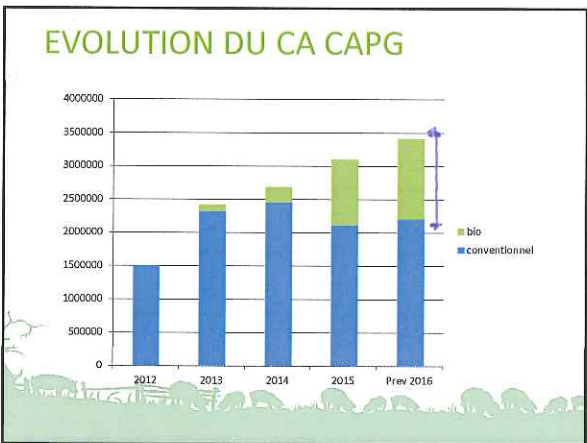
---

---

---

---

---



---

---

---

---

---

---

---

---

## Pour plus d'information

- Site porc bio sur la présentation de la filière  
[www.porcbiologique.fr](http://www.porcbiologique.fr)



---

---

---

---

---

---

---

---